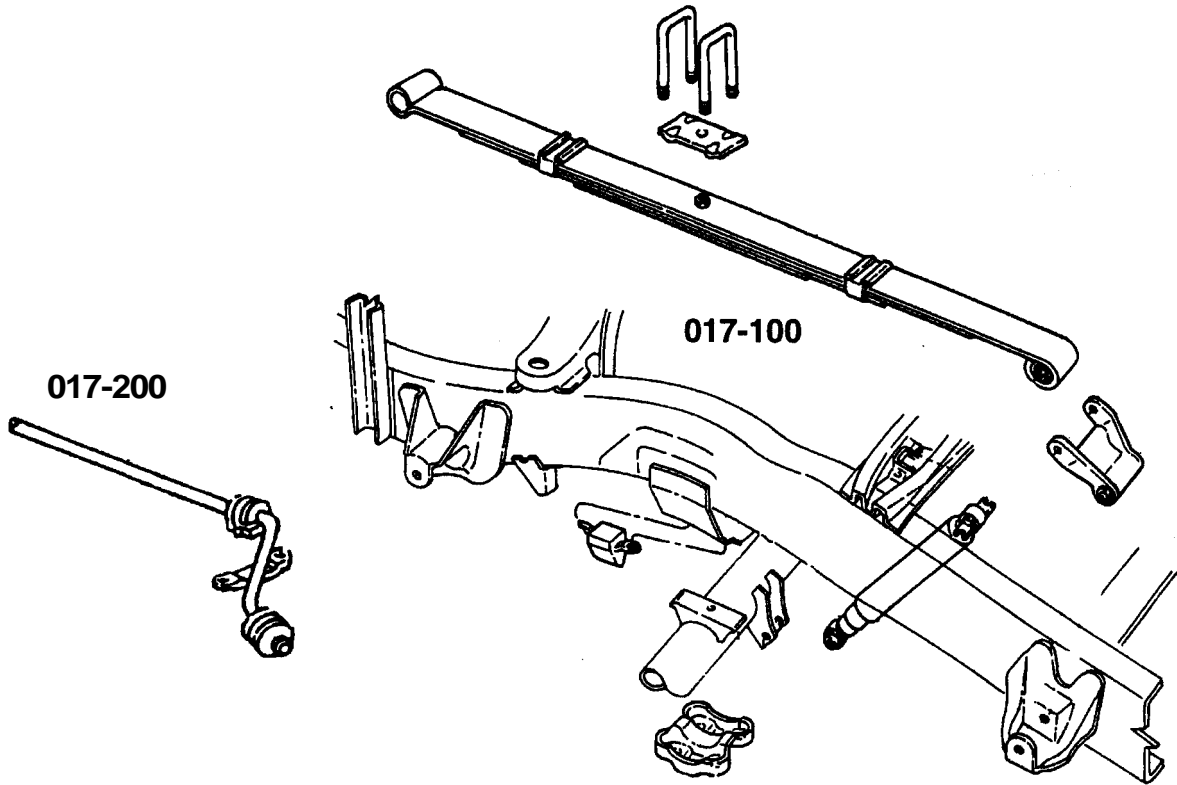
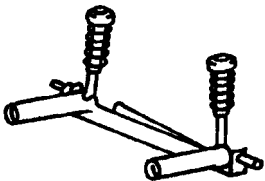
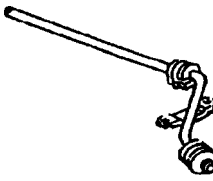


# Group - 017

## Rear Suspension



<p><b>017-100</b> Rear Suspension</p> 	<p><b>017-200</b> Rear Stabilizer</p> 		
---	---	--	--

**Group 017 - Rear Suspension**

**Rear Suspension 017 100**

Suspension, Rear with Shock Absorber. .... .Fig. 017-120

**Rear Stabilizer 017 200**

Illustration missing ..... .Fig. G-1

**JEEP CHEROKEE (LHD) & (RHD) (XJ)**

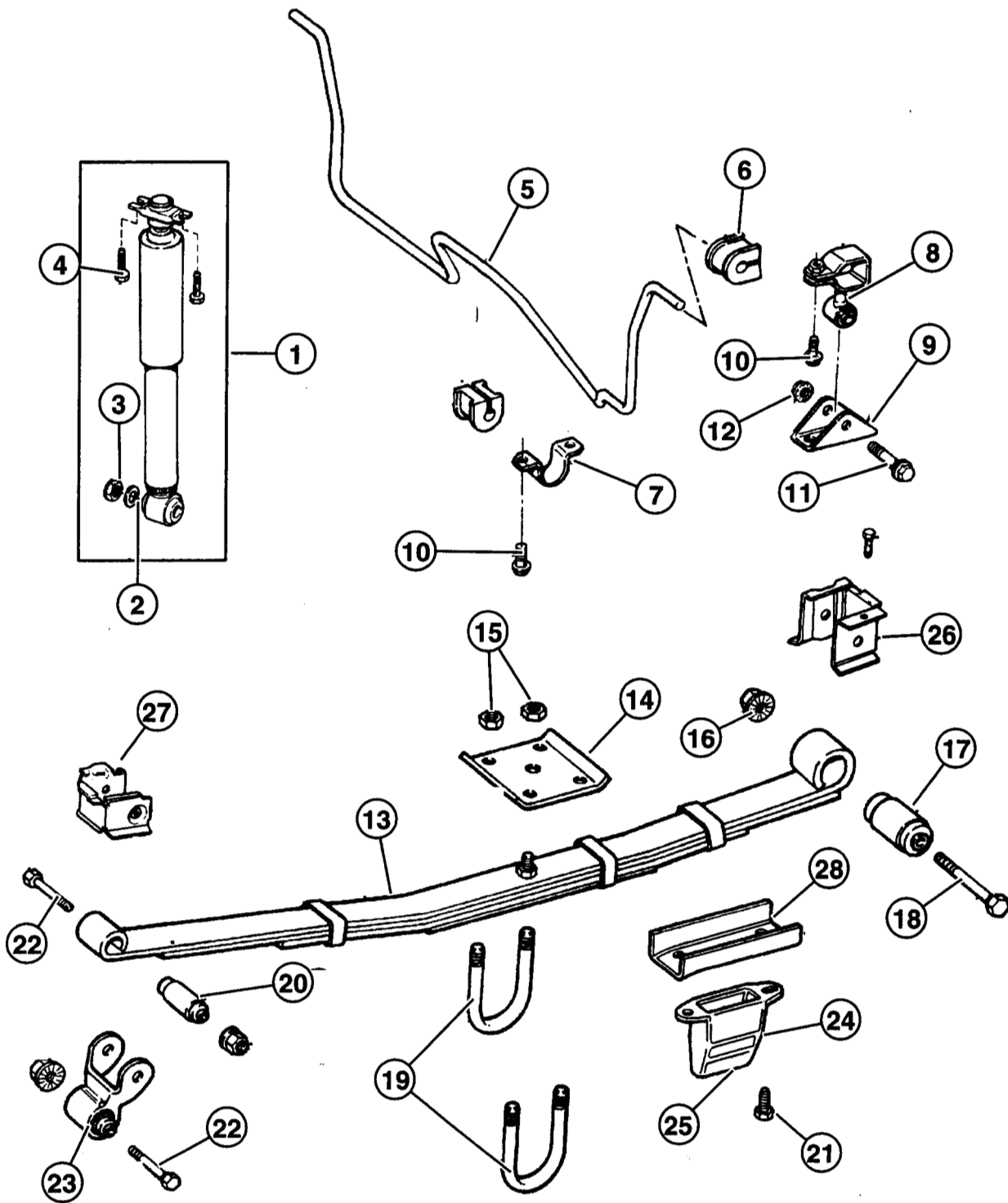
SERIES	LINE	BODY	ENGINE	TRANSMISSION
L=Low Line	J=LHD(4WD) U=RHD(4WD) B=RHD(4x2) T=LHD(4x2)	74=4 Dr. 72=2 Dr.	EN0=2.5L(ENC) Diesel ER0=4.0L(ERH) EP0=2.5L(EPE)	DG0=All Auto/Trans DGW=44RE (DGB) DDQ=5 spd. AISIN DGK=42RE (DGB) DBB=All Manual Trans. DGS=4 spd. Auto. AISIN DGD= 3 spd. Auto (DGA)

**Group 017 - Rear Suspension****JEEP CHEROKEE (LHD) & (RHD) (XJ)**

<b>SERIES</b>	<b>LINE</b>	<b>BODY</b>	<b>ENGINE</b>	<b>TRANSMISSION</b>
L=Low Line	J=LHD(4WD) U=RHD(4WD) B=RHD(4x2) T=LHD(4x2)	74=4 Dr. 72=2 Dr.	EN0=2.5L(ENC) Diesel ER0=4.0L(ERH) EP0=2.5L(EPE)	DG0=All Auto/Trans DGW=44RE (DGB) DDQ=5 spd.AISIN DGK=42RE (DGB) DBB=All ManualTrans. DGS=4 spd. Auto. AISIN DGD = 3 spd. Auto (DGA)

Suspension, Rear with Shock Absorber

017-120



ITEM	PART	QTY	LINE	SERIES	BODY	ENGINE	TRANS	DESCRIPTION
<b>Suspension, Rear with Shock Absorber</b>								
1	5208 7777	2						SHOCK ABSORBER, Suspension SDA, Standard Suspension, 1997 XJ, 1998 XJ
	5208 7948	2						SDB, Heavy Duty Suspension, 1997 XJ, 1998 XJ
	#52087 948AB	2						SDB, Heavy Duty Suspension, 1999 XJ
2	1150 0325	2						WASHER, Shock Absorber
3	5003 570AA	2				EN0		BOLT, Alternator Bracket 1999 XJ
	6502 038	2						1997 XJ, 1998 XJ
4	J400 1933	2						SCREW, Hex Flange Head, .312-x18x.875
	J400 1933	1	B, U			EPO, ERO		1999 XJ
5	5200 1135	1						BAR, Rear Sway
6	5200 1145	4						CUSHION, Sway Eliminator
7	5208 7865	2						RETAINER, Sway Bar
8	5200 1094	2						LINK, Sway Eliminator
9	5200 6450	2						BRACKET, Stabilizer Bar
10	1150 2628	3				EPO		BOLT, Hex Flange Head, M8x1.25x30 1997 XJ
	1150 2628	2				EPO	DGD	1999 XJ
	3420 1756	2						1997 XJ, 1998 XJ
11	1150 5098	1						BOLT, Hex Flange Head, M12x1.75x60
12	6502 697	2						NUT, Hex Flange Lock, M12x1.75 1999 XJ
	6502 697	8						1997 XJ, 1998 XJ
13	52000 050AB	1						SPRING, Rear Leaf w/ZUS,ZFS (2157#)
	52000 051AB	1						w/ZUT,ZFT (2424#)
	52000 544AB	1						w/ZVS,ZGS (2157#)
	52000 545AB	1						w/ZVT,ZGT (2524#)
	52000 706AB	1						w/ZUU,ZFU (2961#)
	52000 707AB	1						w/ZVU,ZGU (2691#)
	52002 390AB	1						w/ZVV,ZGV (Off Road)
	52002 392AB	1						w/ZVW,ZGW (Off Road)
14	5200 6449	2						PLATE, U Bolt
15	6502 697	1						NUT, Hex Flange Lock, M12x1.75 1999 XJ
	6502 697	8						1997 XJ, 1998 XJ
16	1150 2814	2						NUT, Hex Flange Lock, M14x2
17	5200 0503	1						BUSHING, Spring
18	3420 2118	6						BOLT, Hex Flange Head, M14x2.0x120
19	5200 6440	4						U-BOLT, Rear Spring, 2x.625
20	5200 0504	1						BUSHING, Spring
21								SCREW, Shouldered Hex Head, 25 mm, (NOT SERVICED)
22								SCREW, Pan Head Torx, M8x1.25x30.00, (NOT SERVICED)
23	5200 0507	2						SHACKLE, Spring
24	5200 4297	2						BUMPER, Suspension Jounce
25								BUMPER, Jounce

**JEEP CHEROKEE (LHD) & (RHD) (XJ)**

SERIES	LINE	BODY	ENGINE	TRANSMISSION
L=Low Line	J=LHD(4WD) U=RHD(4WD) B=RHD(4x2) T=LHD(4x2)	74=4 Dr. 72=2 Dr.	EN0=2.5L(ENC) Diesel ER0=4.0L(ERH) EP0=2.5L(EPE)	DG0=All Auto/Trans DGW=44RE (DGB) DDQ=5 spd. AISIN DGK=42RE (DGB) DBB=All Manual Trans. DGS=4 spd. Auto. AISIN DGD = 3 spd. Auto (DGA)

ITEM	PART	QTY	LINE	SERIES	BODY	ENGINE	TRANS	DESCRIPTION
<b>Suspension, Rear with Shock Absorber</b>								
	5200 2393	2	J, U					1997 XJ
	5200 2393	2	J, U					Heavy Duty w/Gas, 1999 XJ
	5200 4295	2						1998 XJ, 1999 XJ
26								BRACKET, Spring
	5500 1100	1						Right, 1997 XJ
	5500 1101	1						Left
27								BRACKET, Spring
	5500 1102	1						Right, 1997 XJ
	5500 1103	1						Left
28								REINFORCEMENT, Jounce Bumper
	5200 2386	2	J					1997 XJ
	5200 2386	2	J, U					1998 XJ, 1999 XJ

**JEEP CHEROKEE (LHD) & (RHD) (XJ)**

SERIES	LINE	BODY	ENGINE	TRANSMISSION
L=Low Line	J=LHD(4WD) U=RHD(4WD) B=RHD(4x2) T=LHD(4x2)	74=4 Dr. 72=2 Dr.	EN0=2.5L(ENC) Diesel ER0=4.0L(ERH) EP0=2.5L(EPE)	DG0=All Auto/Trans DGW=44RE (DGB) DDQ=5 spd. AISIN DGK=42RE (DGB) DBB=All Manual Trans. DGS=4 spd. Auto. AISIN DGD = 3 spd. Auto (DGA)